



# It Straps On, Inc.®

74525 Oil Row  
Covington, LA 70435  
[www.isostainless.com](http://www.isostainless.com)

**Manufacturer of  
Stainless Steel Banding, Sign Brackets, Buckles, and Wing Seals**

**Office: (985) 875-0080  
Fax: (985) 875-0088  
Email: [Sales@itstrapson.com](mailto:Sales@itstrapson.com)**

## **We ARE “The Band and Buckle Experts”**

We are an American manufacturer of stainless steel banding, Color Fast™ bands, sign brackets, buckles, and wing seals. We purchase U.S.-made steel that meets or exceeds ASTM standards. We also have various banding tools and accessories to mount signs and other traffic control devices to poles. The attached catalog illustrates just a few of the products we have available.

We would welcome the opportunity to earn your business and give you a competitive quote for our products. Plus, we are happy to send you a sample of our products.

Dee Mooney – Export, Oil & Gas Sales  
It Straps On, Inc.®



**ISO Stainless®**

Phone: (985) 875-0080

Fax: (985) 875-0088

[www.isostainless.com](http://www.isostainless.com)

**ISO TYPE 201 STAINLESS STEEL BANDING**

<u>PART #</u>	<u>WIDTH</u>	<u>THICKNESS</u>	<u>LENGTH ROLL</u>	<u>PKG. WEIGHT LB.</u>
BA202	1/4"	.020"	100'	1.7
BA203	3/8"	.025"	100'	3.2
BA204	1/2"	.030"	100'	5.1
BA205	5/8"	.030"	100'	6.4
BA206	3/4"	.030"	100'	7.7
BA207	1"	.030"	100'	10.2
BA208	1 1/4"	.030"	100'	12.8
BA210	2"	.030"	100'	20.4



All banding available in tote upon request except BA207, BA208 & BA210

**ISO TYPE 201 STAINLESS STEEL COLOR FAST™ BLACK BANDING**

<u>PART #</u>	<u>WIDTH</u>	<u>THICKNESS</u>	<u>LENGTH ROLL</u>	<u>PKG. WEIGHT LBS.</u>
BA144 Black	1/2"	.025"	100'	5.5
BA206 K110	3/4"	.030"	100'	8.5



All banding available in tote upon request

**ISO TYPE 316 STAINLESS STEEL BANDING**

<u>PART #</u>	<u>WIDTH</u>	<u>THICKNESS</u>	<u>LENGTH ROLL</u>	<u>PKG. WEIGHT LBS.</u>
BA403	3/8"	.025"	100'	3.5
BA404	1/2"	.030"	100'	5.1
BA405	5/8"	.030"	100'	6.4
BA406	3/4"	.030"	100'	7.7



All banding available in tote upon request

**ISO TYPE 201 & 304 STAINLESS STEEL BUCKLES**

<u>PART #</u>	<u>WIDTH</u>	<u>PER BOX</u>	<u>PKG. WEIGHT LBS.</u>
BU252	1/4"	100	0.3
BU253	3/8"	100	0.8
BU254	1/2"	100	2.1
BU255	5/8"	100	2.4
BU256	3/4"	100	3.7



**ISO TYPE 201 BLACKENED STAINLESS STEEL BUCKLES**

<u>PART #</u>	<u>WIDTH</u>	<u>PER BOX</u>	<u>PKG. WEIGHT LBS.</u>
BOBU254	1/2"	100	2.1
BOBU256	3/4"	100	3.7



**ISO TYPE 316 STAINLESS STEEL BUCKLES**

<u>PART #</u>	<u>WIDTH</u>	<u>PER BOX</u>	<u>PKG. WEIGHT LBS.</u>
BU453	3/8"	100	0.8
BU454	1/2"	100	2.1
BU455	5/8"	100	2.4
BU456	3/4"	100	3.7



**ISO BULL'S EYE® STAINLESS STEEL SIGN BRACKETS**

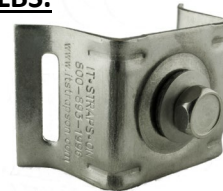
**SINGLE BOLT STRAIGHT LEG**

<u>PART #</u>	<u>DESCRIPTION</u>	<u>PER BOX</u>	<u>PKG. WEIGHT LBS.</u>
SB001	SS Bracket, W/Bolt & Washer	50	7.3
SB004	SS Bracket, No Bolt or Washer	50	6.0
BESB001	SS Bracket, W/Bolt & Washer	50	7.6
BESB004	SS Bracket, No Bolt or Washer	50	6.3



**SINGLE BOLT FLARED LEG**

<u>PART #</u>	<u>DESCRIPTION</u>	<u>PER BOX</u>	<u>PKG. WEIGHT LBS.</u>
SB021	SS Bracket, W/Bolt & Washer	50	7.6
SB022	SS Bracket, No Bolt or Washer	50	6.0
BESB021	SS Bracket, W/Bolt or Washer	50	7.6
BESB022	SS Bracket, No Bolt or Washer	50	6.0



**ISO TYPE 201 LITE GAUGE STAINLESS STEEL BANDING**

<u>PART #</u>	<u>WIDTH</u>	<u>THICKNESS</u>	<u>LENGTH ROLL</u>	<u>PKG. WEIGHT LBS.</u>
LG134	1/2"	.015"	100'	2.9
LG135	5/8"	.015"	100'	3.6
LG136	3/4"	.015"	100'	4.4
LG181	1/2"	.020"	100'	4.2
LG171	5/8"	.020"	100'	5.6
LG161	3/4"	.020"	100'	5.7
LG145	5/8"	.025"	100'	5.6
LG146	3/4"	.025"	100'	6.7
LG128	1/2"	.015"	200'	5.8
LG129	5/8"	.015"	200'	7.3
LG130	3/4"	.015"	200'	8.8



**ISO TYPE 201 LITE GAUGE STAINLESS STEEL BANDING CON'T**

<u>PART #</u>	<u>WIDTH</u>	<u>THICKNESS</u>	<u>LENGTH ROLL</u>	<u>PKG. WEIGHT LBS.</u>
LG183	1/2"	.020"	200'	7.6
LG173	5/8"	.020"	200'	11.2
LG163	3/4"	.020"	200'	11.4
LG149	5/8"	.025"	200'	11.2
LG150	3/4"	.025"	200'	13.4

All banding available in tote upon request



**ISO TYPE 304 LITE GAUGE STAINLESS STEEL BANDING**

<u>PART #</u>	<u>WIDTH</u>	<u>THICKNESS</u>	<u>LENGTH ROLL</u>	<u>PKG. WEIGHT LBS.</u>
LG134-304	1/2"	.015"	100'	2.9
LG135-304	5/8"	.015"	100'	3.6
LG136-304	3/4"	.015"	100'	4.4
LG128-304	1/2"	.015"	200'	5.8
LG129-304	5/8"	.015"	200'	7.3
LG130-304	3/4"	.015"	200'	8.8
LG181-304	1/2"	.020"	100'	3.8
LG171-304	5/8"	.020"	100'	5.6
LG161-304	3/4"	.020"	100'	5.7
LG183-304	1/2"	.020"	200'	7.6
LG173-304	5/8"	.020"	200'	9.5
LG163-304	3/4"	.020"	200'	11.3

All banding available in tote upon request



**ISO TYPE 201 COLOR FAST™ BAND**

<u>PART #</u>	<u>WIDTH</u>	<u>THICKNESS</u>	<u>LENGTH ROLL</u>	<u>PKG. WEIGHT LBS.</u>
BA144 Color	1/2"	.025"	100'	3.8
BA145 Color	5/8"	.025"	100'	5.6

Colors available: Black, Dark Blue, Brown, Gray, Green, Light Blue, Orange, Pink, Purple, Red, Stainless Steel, Tan, White, and Yellow



**ISO TYPE 201 COLOR FAST™ BAND CUT TO LENGTH – 1/2"**

<u>PART #</u>	<u>WIDTH</u>	<u>THICKNESS</u>	<u>LENGTH</u>	<u>PKG. DETAILS</u>
CTL 1/2" w/wing seal	1/2"	.025"	Various	100/Box

Colors available: Black, Dark Blue, Brown, Gray, Green, Light Blue, Orange, Pink, Purple, Red, Stainless Steel, Tan, White, and Yellow

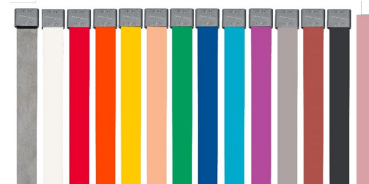


### ISO TYPE 201 COLOR FAST™ BAND CUT TO LENGTH – 5/8"

<u>PART #</u>	<u>WIDTH</u>	<u>THICKNESS</u>	<u>LENGTH</u>	<u>PKG. DETAILS</u>
---------------	--------------	------------------	---------------	---------------------

CTL 5/8" w/centerpunch seal	5/8"	.025"	Various	100/Box
-----------------------------	------	-------	---------	---------

Colors available: Black, Dark Blue, Brown, Gold, Gray, Green, Light Blue, Orange, Pink, Purple, Red, Seafoam Green, Stainless Steel, Tan, Turquoise, White, and Yellow



### ISO TYPE 201 & 316 WING SEALS

<u>PART #</u>	<u>WIDTH</u>	<u>PER BOX</u>	<u>PKG. WEIGHT LBS.</u>
---------------	--------------	----------------	-------------------------

WS153	3/8"	100	0.8
WS154	1/2"	100	1.1
WS155	5/8"	100	1.8
WS156	3/4"	100	2.1
WS453N	3/8" Type 316	100	0.8
WS454N	1/2" Type 316	100	1.1
WS455N	5/8" Type 316	100	1.8



### ISO TYPE 201 BLACKENED WING SEALS

<u>PART #</u>	<u>WIDTH</u>	<u>PER BOX</u>	<u>PKG. WEIGHT LBS.</u>
---------------	--------------	----------------	-------------------------

BOWS154	1/2"	100	1.1
BOWS156	3/4"	100	2.1



### ISO SCREW BUCKLES

<u>PART #</u>	<u>WIDTH</u>	<u>PER BOX</u>	<u>PKG. WEIGHT LBS.</u>
---------------	--------------	----------------	-------------------------

SC722	3/8"	50	0.5
SC724	1/2"	25	0.5
SC726	3/4"	25	0.9



### BANDING TOOLS

<u>PART #</u>	<u>DESCRIPTION</u>	<u>PKG. WEIGHT LBS.</u>
---------------	--------------------	-------------------------

TOO1	ISO Cool Tool	4.5
T101	Ratchet Tensioner	3.0
T300	Center Punch Tool	3.25
T1902D	Insulation Tensioner	3.3
T1916	Tensioning Tool	5





**BANDING CUTTERS**

<u>PART #</u>	<u>DESCRIPTION</u>	<u>PKG. WEIGHT LBS.</u>
T502	Light Duty Cutter	1.5
T545	Medium Duty Cutter	3.0



**PVC OR PPA COATED STAINLESS STEEL BANDING**

<u>PART #</u>	<u>DESCRIPTION</u>
BACO4349	Type 316 1/2" coated stainless steel banding - 82.5' Length
BACO4359	Type 316 5/8" coated stainless steel banding - 82.5' Length

**WING SEALS**

<u>PART #</u>
WS454N
WS455N

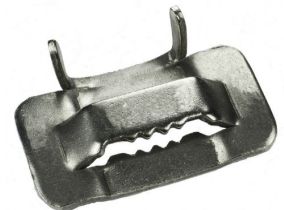
**ISO TYPE 201 & 316 HEAVY DUTY STAINLESS STEEL BANDING**

<u>PART #</u>	<u>WIDTH</u>	<u>THICKNESS</u>	<u>ROLL</u>	<u>PKG. WEIGHT LBS.</u>
BA430	3/4"	.044	100'	11.6
BA431	1"	.044	100'	13.7
BA432	1 1/4"	.044	100'	21
BA432-316	1 1/4"	.044	100'	21



**ISO TYPE 201 & 304 STAINLESS STEEL BIGGER BUCKLES**

<u>PART #</u>	<u>WIDTH</u>	<u>PER BOX</u>	<u>PKG. WEIGHT LBS.</u>
BU440	3/4"	25	1.8
BU441	1"	25	2.4
BU442	1 1/4"	25	3.2

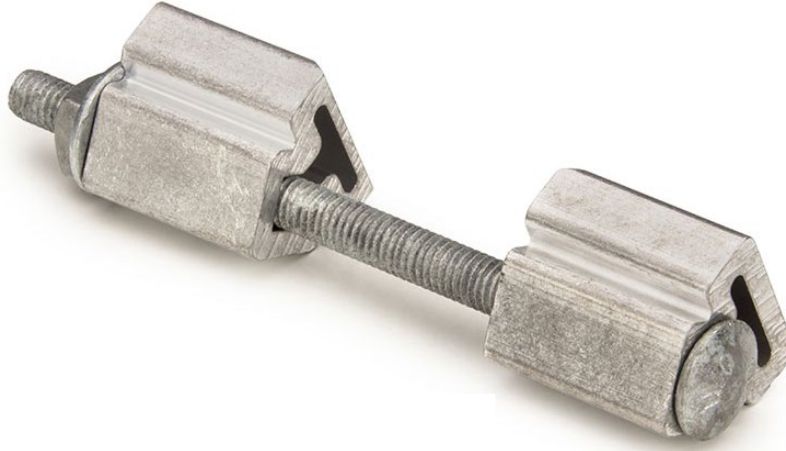


**HEAVY DUTY BANDING TOOLS**

<u>PART #</u>	<u>DESCRIPTION</u>	<u>PKG. WEIGHT LBS.</u>
T402	Bigger Tool	10.7
T550	Heavy Duty Cutter	7



**BOLT CLAMPS – 3/4” and 1-1/4”**



<b><u>PART #</u></b>	<b><u>DESCRIPTION</u></b>
BC .75	Bolt Clamp for use with Type 201 or Type 316 ISO 3/8” band through 3/4” Includes galvanized nut, bolt 3/8 – 16 x 6” and washer
BC 1.25	Bolt Clamp for use with Type 201 or Type 316 ISO 3/4” band through 1-1/4” Includes galvanized nut, bolt 5/8 – 11 x 8” and washer

**STAINLESS STEEL K BRACKET™ FOR POLES OR POSTS**

<b><u>PART #</u></b>	<b><u>DESCRIPTION</u></b>	<b><u>LENGTH</u></b>
GHSBF	K Bracket Flat	9”
GHSBC	K Bracket Curved	9”



## MOUNTING PLATES

ISO banding holds this extruded aluminum mounting plate to utility poles. Includes plated 5/8" – 11 x 2" bolt and nut.

- Available in two sizes
- Band slot width 1.375" to accommodate a single or double wrap of ISO Type 201 or Type 316 3/4" or 1 1/4" wide x .044 thick band



## STAINLESS STEEL UNIVERSAL HAMMERLOK™ CAP

Hammerlok™ Cap Fits Square, Round or U-Channel Post. Sign mounting assembly fits Flat or Extruded blades and comes in 9", 12", 15" or 18" blades with holes at 3" centers. Cross blades also available with holes at 3" centers.

